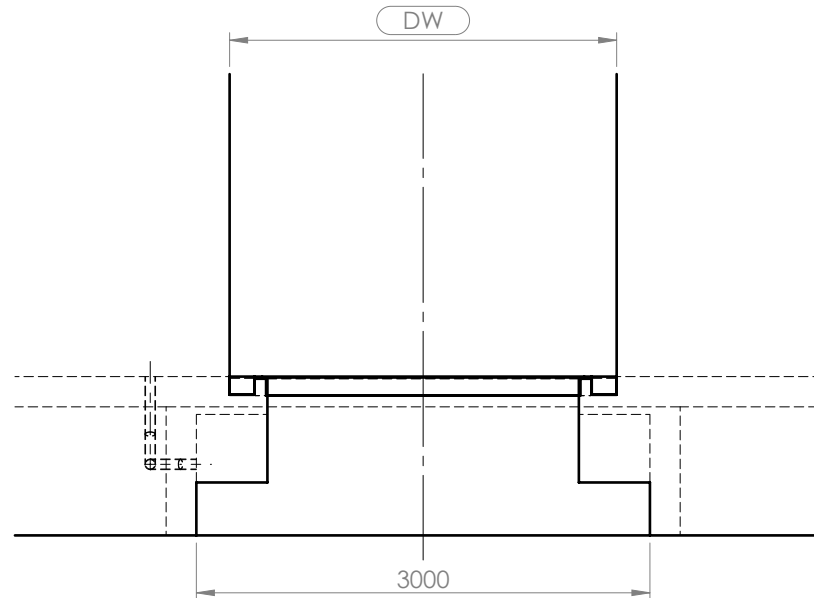
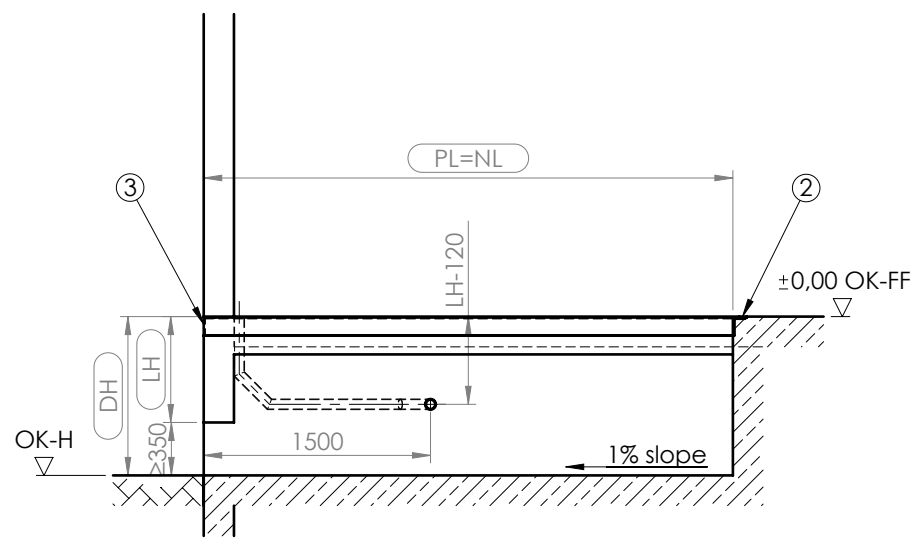
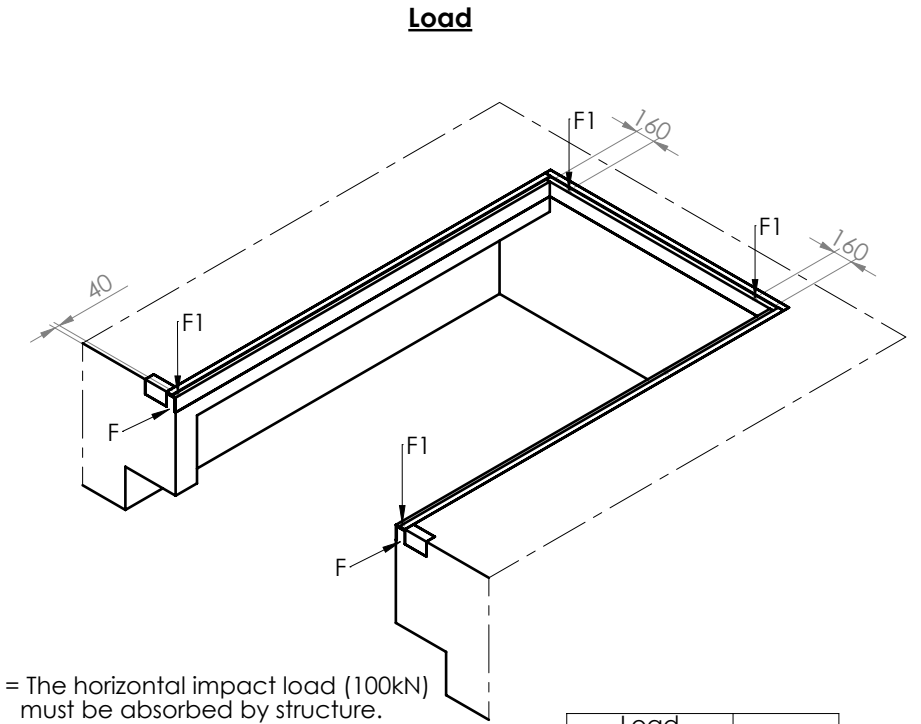


SECTION A-A



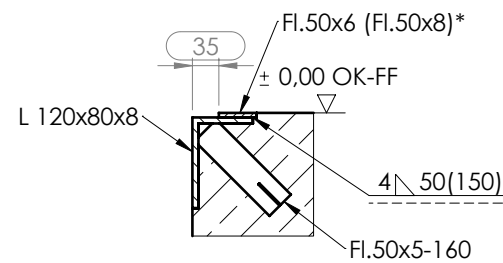
Check the minimum depth for tail-lift, Recommendation 3000 mm



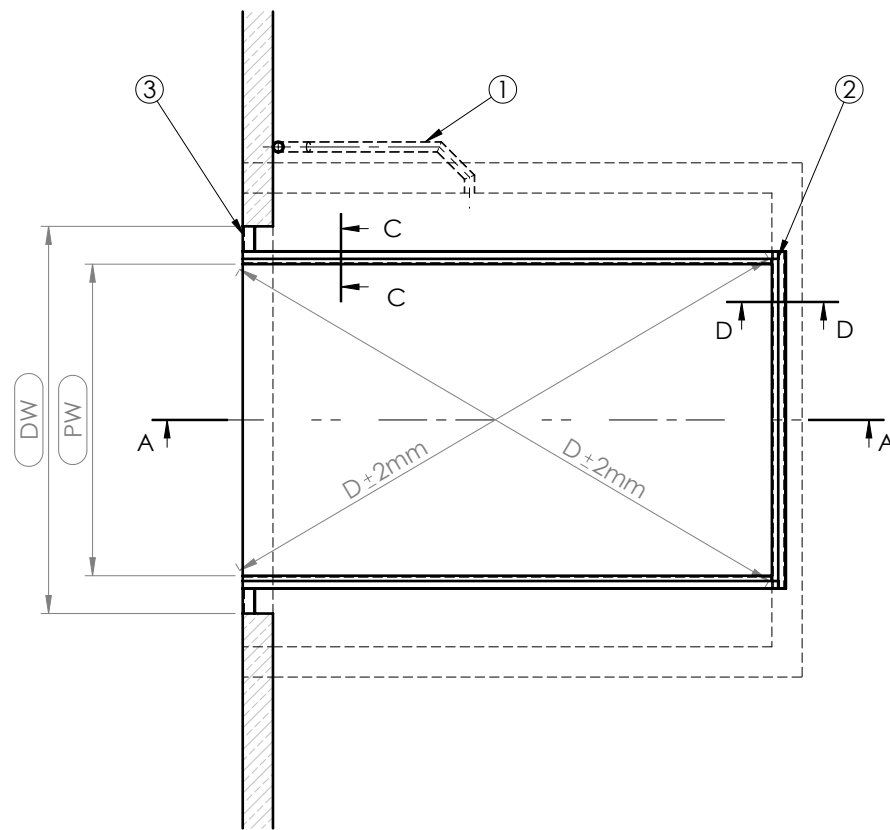
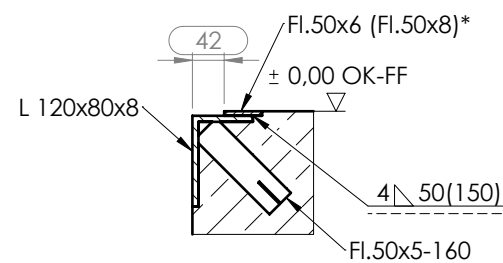
F = The horizontal impact load (100kN) must be absorbed by structure.
F1 = Cross traffic position

Load capacity	F1
60kN	57kN
80kN	76kN
100kN*	95kN

SECTION C-C
SCALE 1 : 10



SECTION D-D
SCALE 1 : 10



Placement of the conduits: either on the right or on the left side.
Illustration: installation on the right side

- DH = Dock height
- DW = Door width
- OK-FF = Finish floor level
- OK-H = Yard level
- PL = Pit length
- PW = Pit width
- NL = Nominal length
- NW = Nominal width
- LH = Leveller height

- by others:
- ① - Conduit for wiring internal diameter min. 50mm, angles <45°
 - ② - Cast in frame
 - ③ - Steel profile e.g. angle 120x80x10
- Attention:
- Do not deviate from the measurements given
 - The pit walls must be vertical
 - The corners of the pit must be square (diagonals must be equal)
 - The preparation of the pit and the dowels by others

UNLESS OTHERWISE SPECIFIED:
DIMENSIONS ARE IN MILLIMETERS
SURFACE FINISH:
TOLERANCES:
EN 22768 - m, k
EN 13920 - B, F

FINISH:

DEBUR AND
BREAK SHARP
EDGES

DO NOT SCALE DRAWING

REVISION **B**

MATERIAL:

	NAME	SIGNATURE	DATE
DRAWN	P.Zarebski		2019-07-15
CHK'D			
APPV'D			
MFG			
Q.A			



TITLE:
**PS cast in frame
with tail lift (by others)**

DWG NO. **PSE.00.00.14-EN**

A3

NL	1750	2000	2000	2500	2500	2750	2750	3000	3000	3500	4000	4500
LH	700	600	700	600	700	600	700	600	700	800	900	900

Installation place drawn: NL=3500
NW=2000
LH=800

NW	PW
1750	1810
2000	2060
2200	2260
2250	2310

WEIGHT:

SCALE:1:50

EN